



PICASP
Erasmus+ Project



European Commission
Education,

1.2.1.The PE Network

gabriella.paganelli3@unibo.it

The Practice Enterprise Economy-
Lecture 3



The main objective of this module is the description of the functioning of PE Network in which each chartered PE Unit could attain relationships, customers and suppliers

Two networks are involved in the PE experience:

1. The inner network expressed by customers and suppliers with whom the PE has business relationships
2. The external network, managed by European Pen which is diffused all over the world with much than 7.000 units
 - To implement a new course design at a Higher Education Institution, one must check your national PE network. National PE networks often provide country-specific information, materials and assistance for trainers new to the method. The access is possible from the website <https://www.penworldwide.org/>



PICASP
Erasmus+ Project



CONTACT INFORMATION IN ITALY

Viale Don Calabria, 13

44124 - Ferrara

Italy

T: +39 05 32747902

Email: centrale@simulimpresa.com

Web address:

www.simulimpresa.com

CONTACT INFORMATION IN LITHUANIA

simulith centre

Saltoniskiu str. 58-117

08105 Vilnius

Lithuania

T: +370 5 219 1646

Email: slinfo@viko.lt

Web address:

www.sl.viko.lt

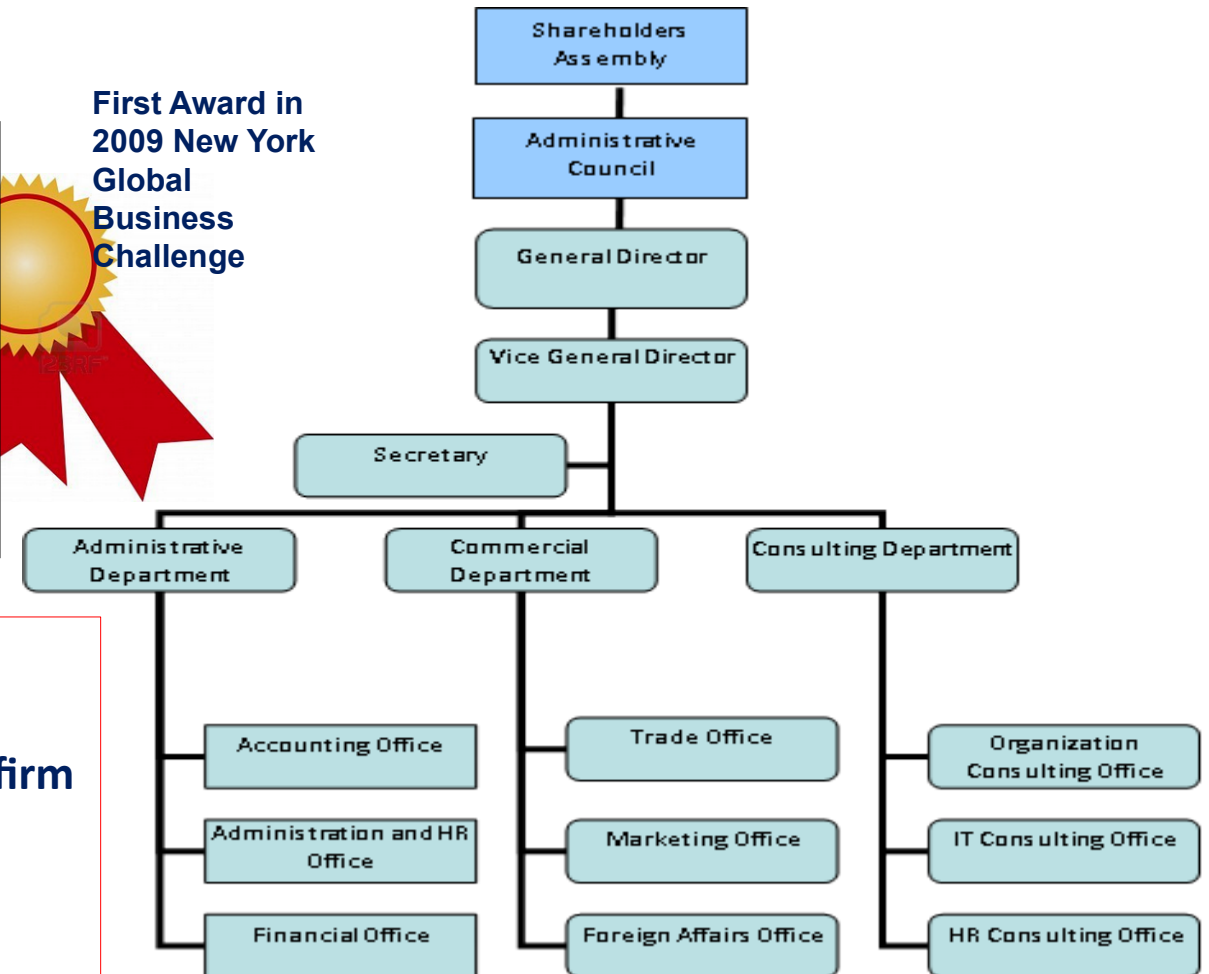
The PERTING and the Laboratory of PE in the University of Bologna

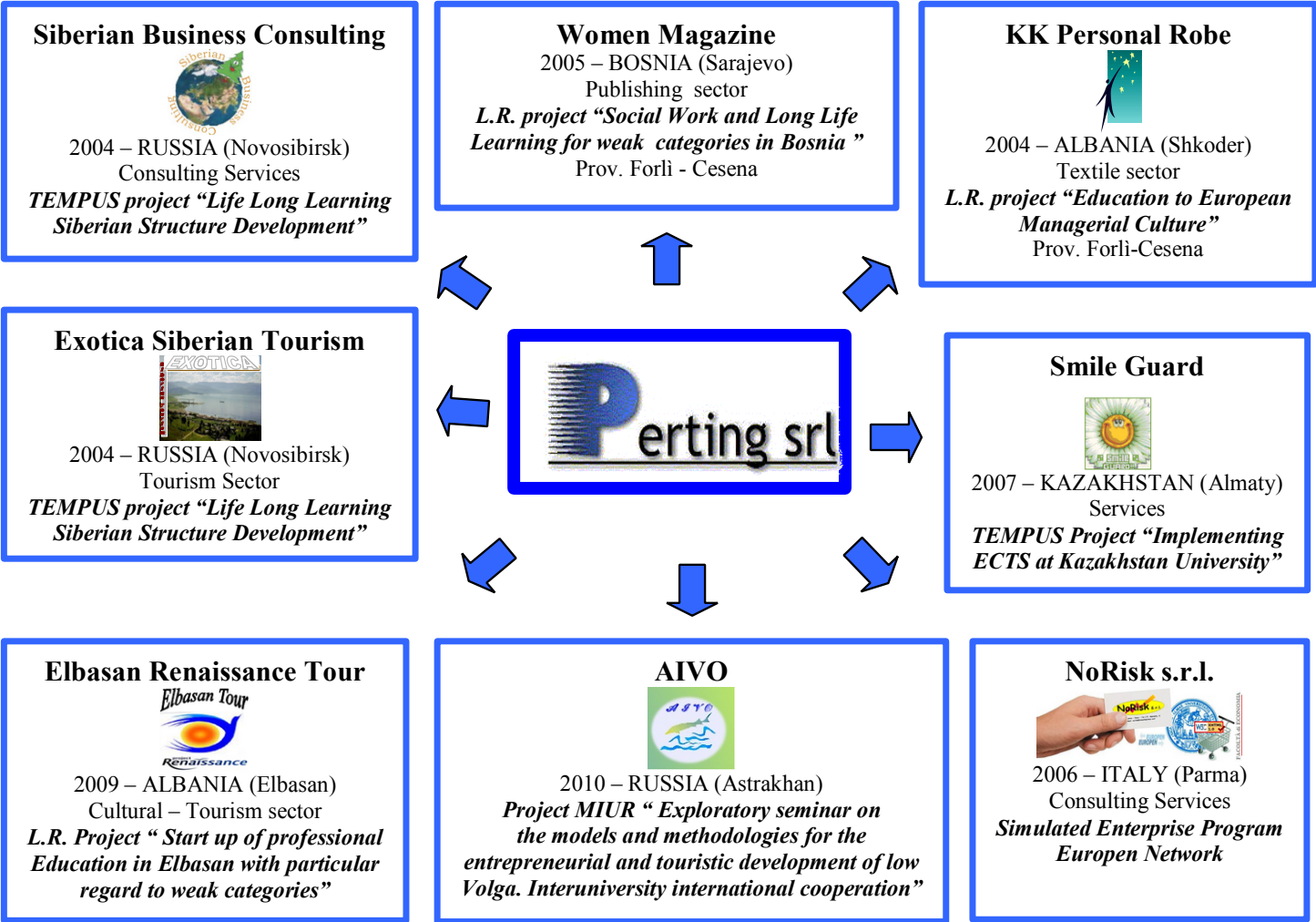
The Laboratory for Enterprise Simulation in Forlì and the Perting Ltd Created on 2001 and still on the market

Perting Ltd. has got as corporate purpose the business of informatics equipments (PC, printers, photo cameras, modems, software and so on.), the supply of services and firm consultancy with the aim to improve the organizative and administrative performances of the other simulated units present into web



First Award in 2009 New York Global Business Challenge







Erasmus+



PICASP
Erasmus+ Project



Perting in Laboratory





**The interaction
between the
real and the
virtual world
having as
model the
laboratory of a
real small
craftsman**

Real World	Virtual World
Input (information)	
	
(raw materials)	
	
Processing (desk of working)	
	
Output (product)	
	